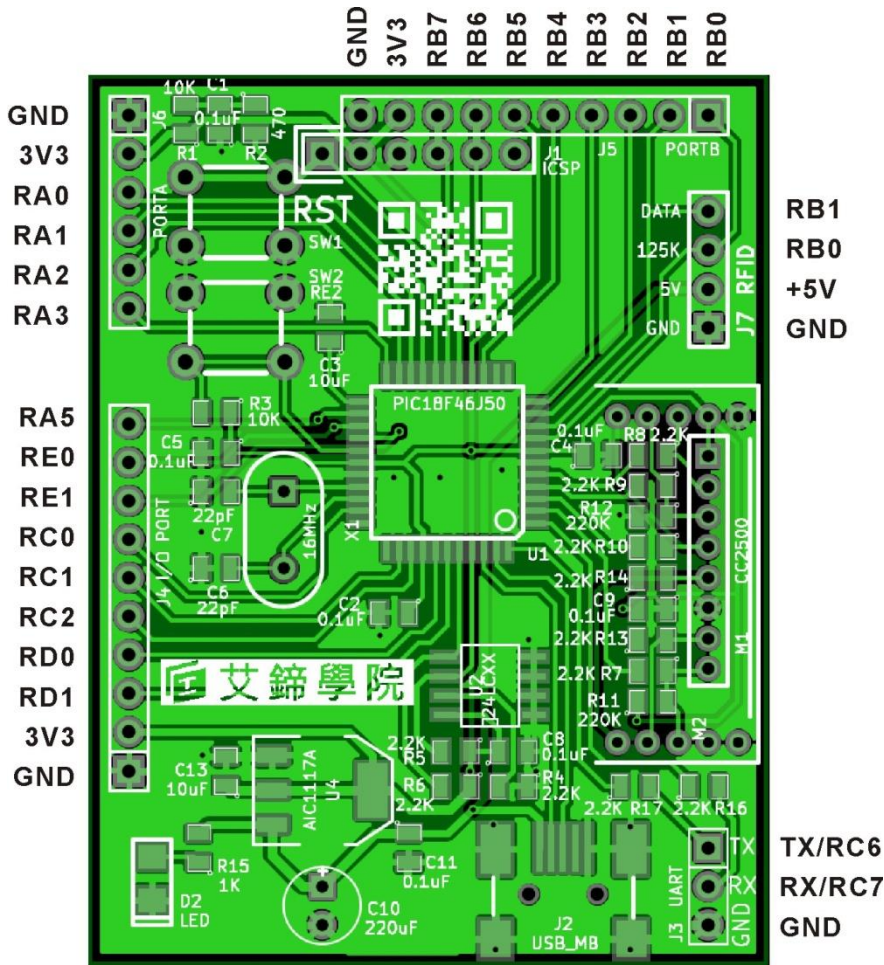
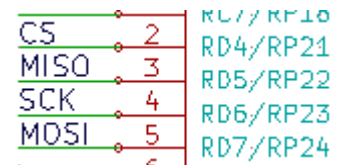


MiniPIC PCB



2.4G RF 模組 CC2500
控制接腳



CS – RD4/RP21
MISO – RD5/RP22
SCK – RD6/RP23
MOSI – RD7/RP24

- MCU 規格：8 位元微控制器，Full Speed USB，PIC18F46J50
- Program Memory：64KB
- RAM Bytes：4KB
- Digital Communication Peripherals：2-UART, 2-A/E/USART, 2-SPI, 2-I2C2-MSSP(SPI/I2C)
- Capture/Compare/PWM Peripherals：2 ECCP /
- Timers：2 x 8-bit, 3 x 16-bit
- ADC：13 ch, 10-bit
- Comparators：2
- USB (ch, speed, compliance)：1, Full Speed, USB 2.0
- Temperature Range(C)：-40 to 85
- Operating Voltage Range (V)：2 to 3.6
- Pin Count：44
- XLP：Yes
- Cap Touch Channels：13